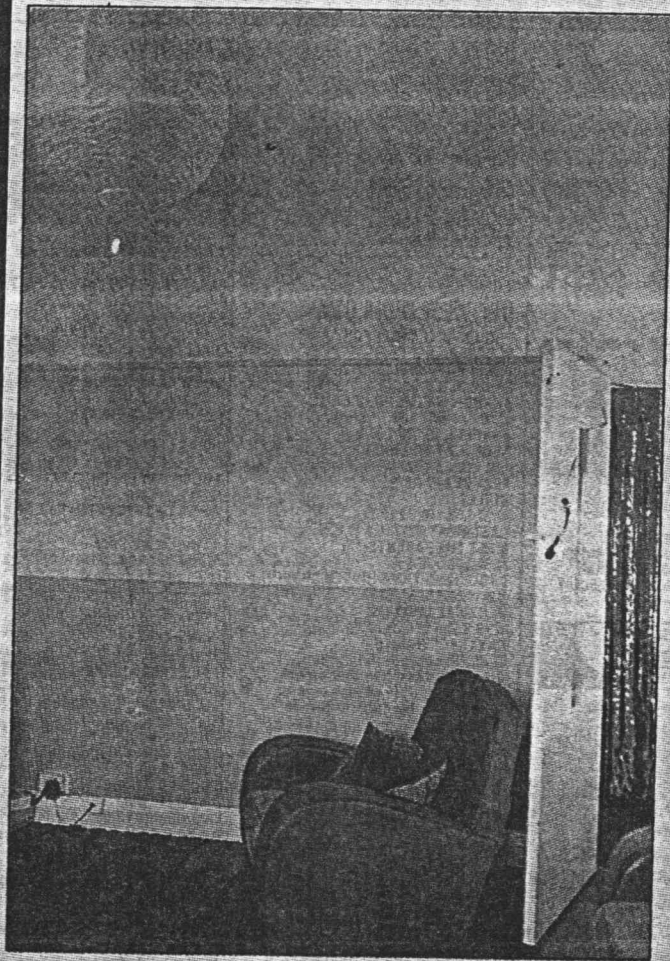


Don't miss



Art

Lothar Götz: Site-specific painting (otherwise known as interior decorating) is what this young German artist turns his hand to. He's hit on a combination of sumptuous colours — purple, pink and navy against yellow, lime and red — and painted them in bold stripes around the gallery's main space. The colours zing on the retina and bounce out at your eye to the point where you lose any tangible relation to the wall. The pink/lime confrontation is particularly strong, causing lilac-and-yellow hazes to appear either side of their boundary. In the gallery next door are a number of photos showing this arrangement of blocky colours at other venues: in a disused church in Southwark (Dilston Grove) and in a private Hackney residence (left). In the church, the colours are disparately arranged on the walls' uneven surfaces, like cut-out panels beneath a dado. The photos of Thirties flats are more exciting, not least because the colours cover every surface of the rooms, crawling over the ceiling and walls to create a holistic and vibrant glowing space. It makes you want to pick up the masking tape and paintbrush and get busy on your own home. Gasworks Gallery, SE11, until 11 February, noon-6pm, 020 7582 6848.

Paul Clark